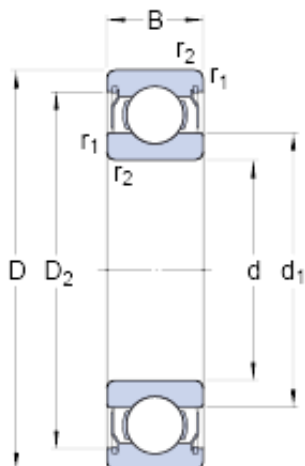




BEARING USA CORP.

20 mm x 25 mm x 4 mm SKF WBB1-8714-2ZS
deep groove ball bearings

Bearing No. WBB1-8714-2ZS



WBB1-8714-2ZS Bearing 2D drawings and 3D CAD models

Size	25x20x4 mm
Bore Diameter	25 mm
Outer Diameter	20 mm
Width	4 mm
d	20 mm
D	25 mm
B	4 mm
d ₁	21.35 mm
D ₂	24 mm
r _{1,2} - min.	0.15 mm
d _a - min.	21 mm
d _a - max.	21 mm
D _a - max.	24.5 mm
r _a - max.	0.15 mm
Basic dynamic load rating - C	0.572 kN
Basic static load rating - C ₀	0.365 kN
Fatigue load limit - P _u	0.016 kN
Reference speed	53000 r/min
Limiting speed	26000 r/min
Calculation factor - k _r	0.015
Calculation factor - f ₀	8.6
d ₁	21.35 mm
D ₂	24 mm
r _{1,2} min.	0.15 mm



BEARING USA CORP.

d_a min.	21 mm
d_a max.	21 mm
D_a max.	24.5 mm
r_a max.	0.15 mm
Basic dynamic load rating C	0.572 kN
Basic static load rating C_0	0.365 kN
Fatigue load limit P_u	0.016 kN
Calculation factor k_r	0.015
Calculation factor f_0	8.6
Mass bearing	0.0034 kg