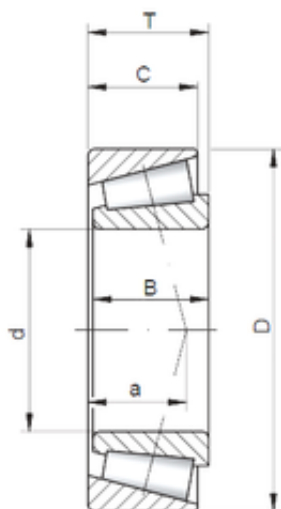




## BEARING USA CORP.



44,45 mm x 93,662 mm x 31,75 mm ISO  
49175/49368 tapered roller bearings

Bearing No. 49175/49368

Size	44.45x93.662x31.75 mm
Bore Diameter	44,45 mm
Outer Diameter	93,662 mm
Width	31,75 mm
d	44,45 mm
D	93,662 mm
T	31,75 mm
B	31,75 mm
C	25,4 mm
a	9,1 mm

49175/49368 Bearing 2D drawings and 3D CAD models